

Blocking

Do not yet weave in ends. Dip for a few minutes in lukewarm water or Eucalan bath and press excess water out gently in a towel. Flatten work and pin out on blocking board. Measurements: 6 ³/₄ by 8 ⁶/₈ inch (17 cm wide and 22 cm deep for the bag. Measures can be different which is no problem as long as the length of the lace edge measures twice the width of the bag. Allow it to dry completely (24 hrs).

Twisted cord

Cut 4 yards (3.5 meters) of yarn. Twist it into a finished cord of 30 inches long with knots on both sides.

Tutorial: <https://www.youtube.com/watch?v=fftJO-p6xm0>

Weave the cord through the holes when the bag is finished. Make sure you end at one side of the bag (at the orange stitch marker in photo 1). Both ends should come out on the inside of the bag. Knot them together.



1



2



3

Tassel

Wind 50 times around the piece of cardboard. cut yarn but leave a tail of 15 inches (40 cm) and wrap this around 4 times while making a knot (photo1).

Slide off the cardboard while holding the wrapped side and cut all loops at once.(photo 2).

Now wrap a few times around this bundle just under the first wraps and use tapestry needle to stitch through and through a couple of times (photo3)

Sew this end neatly into the hole at the bottom of the bag (photo 4 to the right).



4

Lace edge:

Weave in all yarn tails except the one you can use to sew on the lace edge.

Matrass stitch the ends of the lace edge together. Put it around the top of the bag and first pin the two together to space out evenly, then sew them together (photo 5)



5

Note: You could make the bag without lining, but if you want to make the lining it's probably easier to put it in first and sew on the lace edge last.

For lining see next page.

Lining

Outline the shape of the bag on a piece of paper about 1/4 of an inch bigger than the bag. (photo 1). Cut paper (folded in two to make it symmetrical) on the outline.

Pin the paper model on two layers of fabric and cut it without a seam. (photo 2).

Sew fabric together on the machine but leave the top edge open. Sew about 1/2 inch from the edge. This way the lining gets a little smaller than the bag. Cut the seam to 1/4 of an inch (photo 3) and use zigzag stitch to finish the edge and zigzag around the top edge as well.

Put lining inside the knitted bag. (photo 4)

Use a sewing thread in the color of the wool. Hand sew the lining through and through at the 3 st decrease (the triangular shaped symbol in the chart on row 21). Do this at all four 3 st decreases.

Make a 1 inch seam in the top edge of the lining and pin this 2 or 3 rows below the cord holes. (photo 5).

Sew the top of the lining to the purl bumps of the bag (photo 6).

If you've already sewn on the lace edge, make sure to keep your fingers in between the bag and the lining (see photo 5-6)
Weave in cord, cut to desired length and knot together.



1



2



3



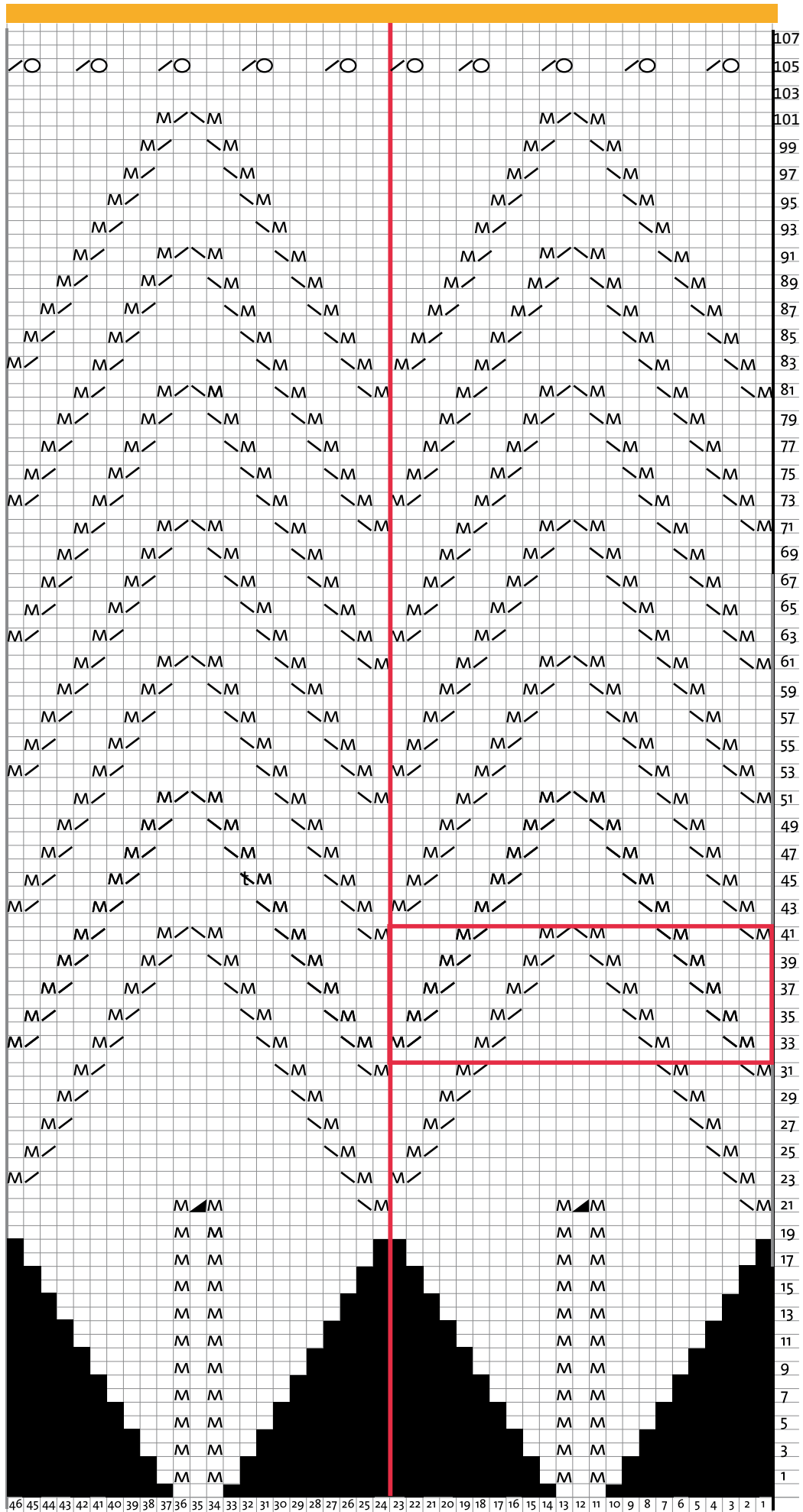
4



5



6



- = Yarn Over.
- M = Make one by knitting bridge in between 2 st of prev. row.
- / = K2tog
- \ = PssO (Slip1, K1, pass slipped st over)
- = Bind off.
- ▲ = Knit 3 together.
- = Ignore.
- = Knit

Drawstring bag CO 12 st (3 on every needle)